

PBCG SERIES - Deep Cycle GEL

PBCG12-60(12V60Ah)

Specification

Nominal Voltage	12V	
Nominal Capacity(20HR)	60.0Ah	
Dimension	Length	260 ±2mm
	Width	170 ±2mm
	Container Height	182.5 ±2mm
	Total Height (with Terminal)	185.5 ±2mm
Approx Weight	Approx 19.0 kg	
Terminal	T6	
Container Material	ABS	
Rated Capacity	61.0 Ah/3.05A	(20hr, 1.80V/cell, 25°C)
	57.0 Ah/5.70A	(10hr, 1.80V/cell, 25°C)
	45.6 Ah/9.12A	(5hr, 1.75V/cell, 25°C)
	42.75 Ah/14.25A	(3hr, 1.75V/cell, 25°C)
	33.63 Ah/33.63A	(1hr, 1.65V/cell, 25°C)
Max. Discharge Current	500A (5s)	
Internal Resistance	Approx 8.5mΩ	
Operating Temp. Range	Discharge	-20 ~ 55°C
	Charge	0 ~ 40°C
	Storage	-20 ~ 50°C
Nominal Operating Temp. Range	25 ±3° C	
Cycle Use	Initial Charging Current less than 12.5A. Voltage	
	14.4V~14.7V at 25°C Temp. Coefficient -30mV/°C	
Standby Use	No limit on Initial Charging Current Voltage	
	13.5V~13.8V at 25°C Temp. Coefficient -20mV/°C	
Capacity affected by Temperature	40° C	103%
	25° C	100%
	0° C	86%
Self Discharge	PBCG series batteries may be stored for up to 9 months at 25° C(77°F) and then a freshening charge is required. For higher temperatures the time interval will be shorter.	



Applications

- ◆ Telecommunications
- ◆ Solar system
- ◆ Wind power system
- ◆ Wheelchair
- ◆ Floor cleaning machines
- ◆ Golf trolley
- ◆ Boats

Intertek



Constant Current Discharge (Amperes) at 25 °C (77°F)

F.V/Time	15min	20min	30min	45min	1h	2h	3h	4h	5h	6h	8h	10h	20h
1.85V/cell	62.70	54.15	43.32	33.06	26.79	17.10	13.11	10.83	8.55	7.41	6.27	5.42	2.93
1.80V/cell	79.80	64.61	50.73	35.91	30.21	18.24	13.68	11.40	8.84	7.98	6.56	5.70	3.05
1.75V/cell	85.50	69.54	53.01	38.19	31.35	18.81	14.25	11.97	9.12	8.27	6.84	5.87	3.17
1.70V/cell	91.20	72.96	55.29	40.17	32.49	19.38	14.82	12.43	9.69	8.55	7.13	6.10	3.29
1.65V/cell	76.95	76.95	57.00	42.18	33.63	20.52	15.39	12.83	10.26	8.84	7.41	6.33	3.42
1.60V/cell	102.6	79.80	59.85	43.89	34.77	21.66	15.96	13.40	10.83	9.41	7.98	6.56	3.54

Constant Power Discharge (Watts) at 25 °C (77°F)

F.V/Time	15min	20min	30min	45min	1h	2h	3h	4h	5h	6h	8h	10h	20h
1.85V/cell	116.00	100.18	80.14	61.16	49.56	31.64	24.25	20.04	15.82	13.71	11.60	10.02	5.42
1.80V/cell	143.64	115.94	91.31	64.64	54.38	32.83	24.62	20.52	15.90	14.36	11.80	10.26	5.49
1.75V/cell	149.63	121.70	92.77	66.83	54.86	32.92	24.94	20.95	15.96	14.46	11.97	10.27	5.55
1.70V/cell	155.04	124.03	93.99	68.80	55.23	32.95	25.19	21.12	16.47	14.54	12.11	10.37	5.60
1.65V/cell	159.89	126.97	94.05	69.60	55.49	33.86	25.39	21.16	16.93	14.58	12.23	10.44	5.64
1.60V/cell	164.16	127.68	95.76	70.22	55.63	34.66	25.54	21.43	17.33	15.05	12.77	10.49	5.66

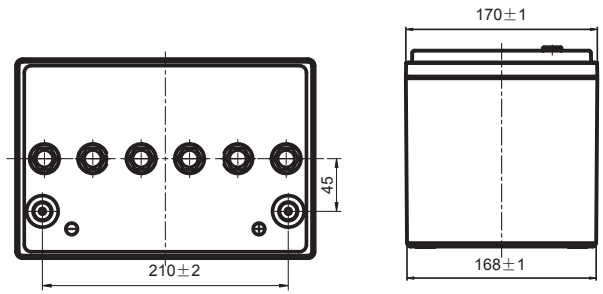
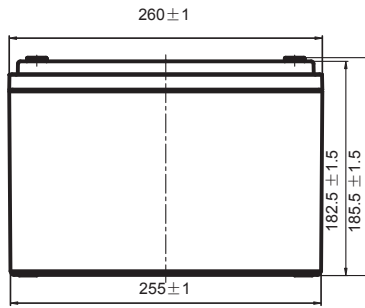
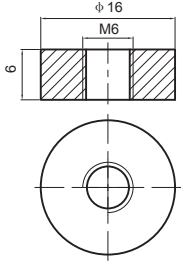
Disclaimer: Manufacturers have the right to self-modify the parameters of the updates without notice, please keep in touch with manufacturers to obtain the latest information.



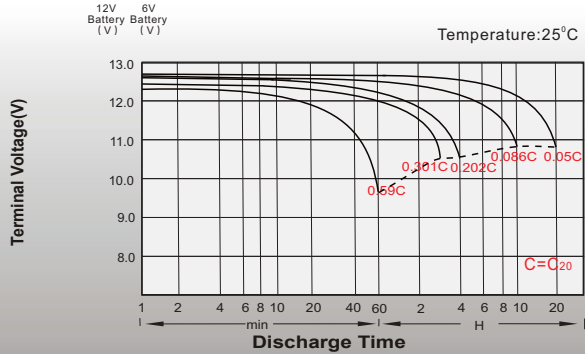
Dimensions

T6 Terminal

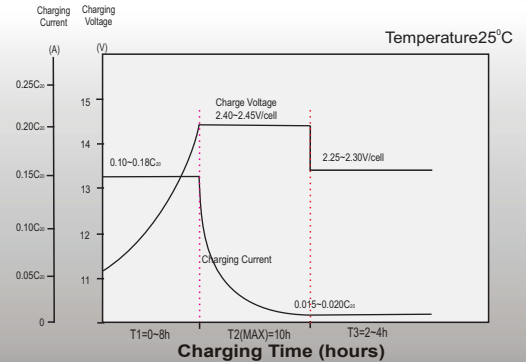
Unit: mm



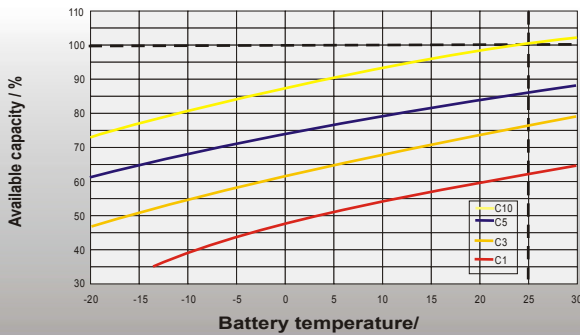
Discharge Characteristics



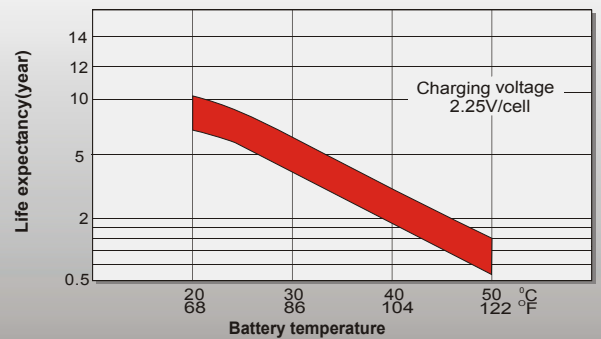
Float Charging Characteristics



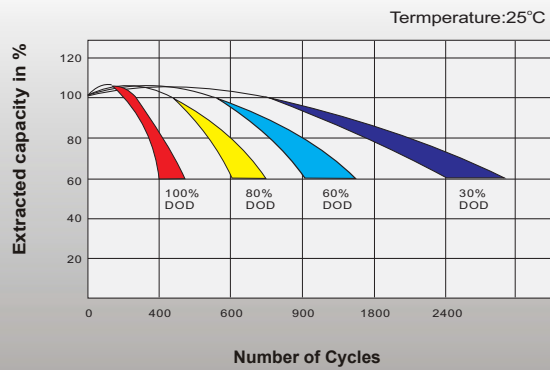
Temperature Effects in Relation to Battery Capacity



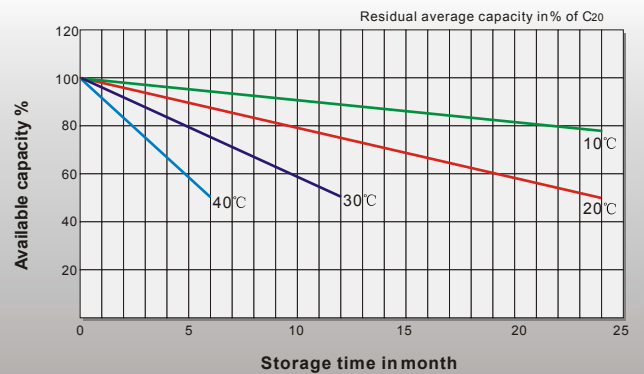
Effect of Temperature on Long Term Float Life



Cycle Life in Relation to Depth of Discharge



General Relation of Capacity VS. Storage Time



Contact